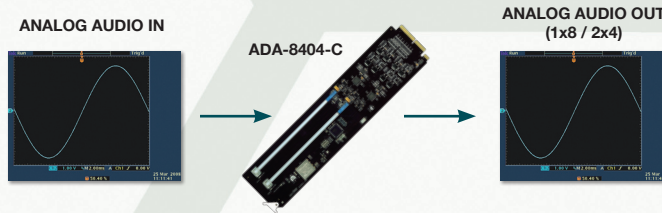
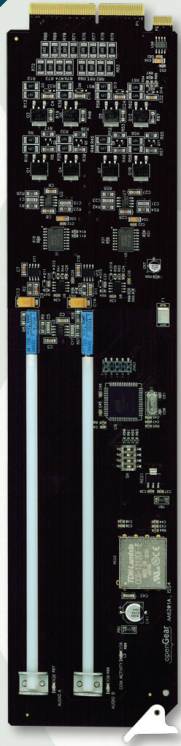


Universal Analog Audio Distribution Amplifier

Distribution of stereo / mono analog audio signals in a mixed digital / analog system without the need for a separate analog frame.

The ADA-8404-C is an analog audio distribution amplifier designed for broadcast use. It offers excellent common-mode rejection with very low distortion and adjustable gain control from +18dB to -14dB. The ADA-8404-C can be used as either a mono or two channel (stereo) audio DA. It provides eight copies of the single (mono) input signal or four copies each of the two (stereo) inputs. For high density applications, the Split Mono Rear Module (R2CSM-8404) is used, allowing 20 individual DAs configured as 1x4 to fit inside a single 2RU frame. For even higher density installations, the ADA-8404-C can be used with the Split Stereo Rear Module (R2CSS-8404) to provide dual 1x3 channels per slot, resulting in 20 stereo channels or 40 mono channels inside a single 2RU frame.

The ADA-8404-C is fully compliant with all openGear technical specifications and supports remote monitoring via the DashBoard Control System.



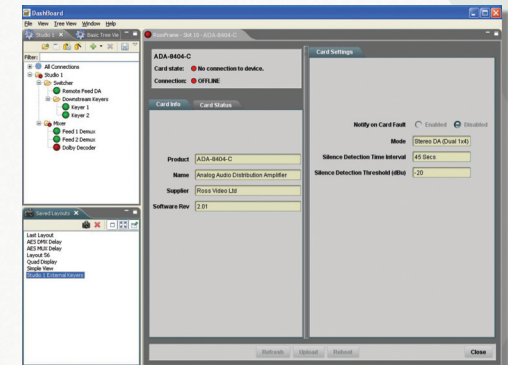
Features

- Handles mono or stereo signals
- Summing capability
- Silence detection
- Non-volatile on-board configuration storage
- +18dB to -14dB Adjustable Gain
- Excellent common-mode rejection
- Very low distortion
- Card-edge trim pot gain adjustment
- Up to 20 stereo or 40 mono channels in a single 2RU frame
- Fits DFR-8310 and DFR-8320 series frames
- Balanced I/O
- 5 year transferable warranty
- Power: 3 watts

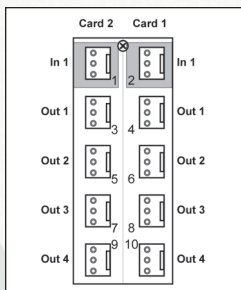
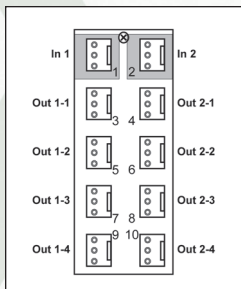


REMOTE CONTROL and MONITORING

- Network control
- Ethernet 10/100 Mbit connectivity
- System wide alarm monitoring



Rear Connection



Functional Block Diagram

