



# NiGMA 系列: 高性能L-band 矩阵





# ETL NiGMa系列驱动射频矩阵新高度



# NiGMa – 性能 I



- ✓ 32 x 32 L-band 矩阵
- ✓ 6U 机箱
- ✓ 热插拔输入输出卡
- ✓ Single card per input & output – increased flexibility, reduced risk
- ✓ 良好扩展性，支持2x2 至 1024x1024
- ✓ 人性化操作：VGA显示，触摸屏



# NiGMa - 性能II



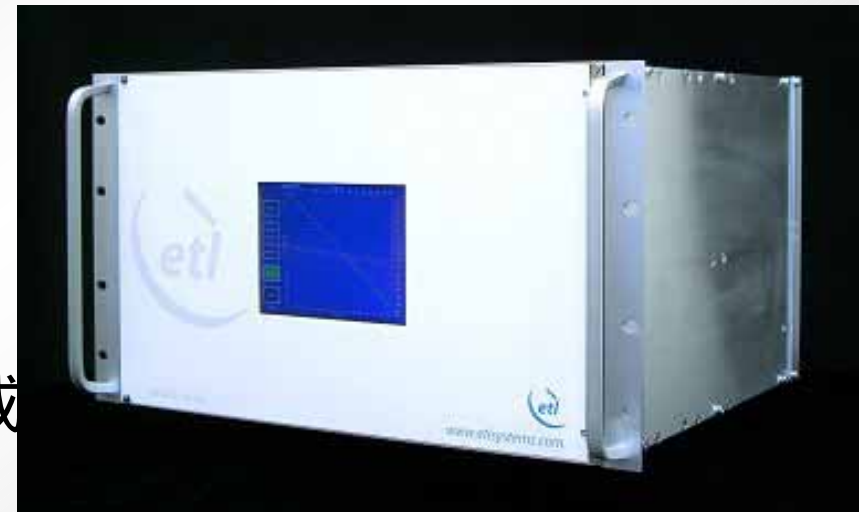
- ✓ 自身诊断和报告系统 - 监控放大器故障、内部通信失败和电源故障等
- ✓ 热插拔，双冗余CPU
- ✓ 双总线，双电源
- ✓ 热冗余HMI 控制器
- ✓ 模块插拔前后都支持
- ✓ 以太网、串口远程控制



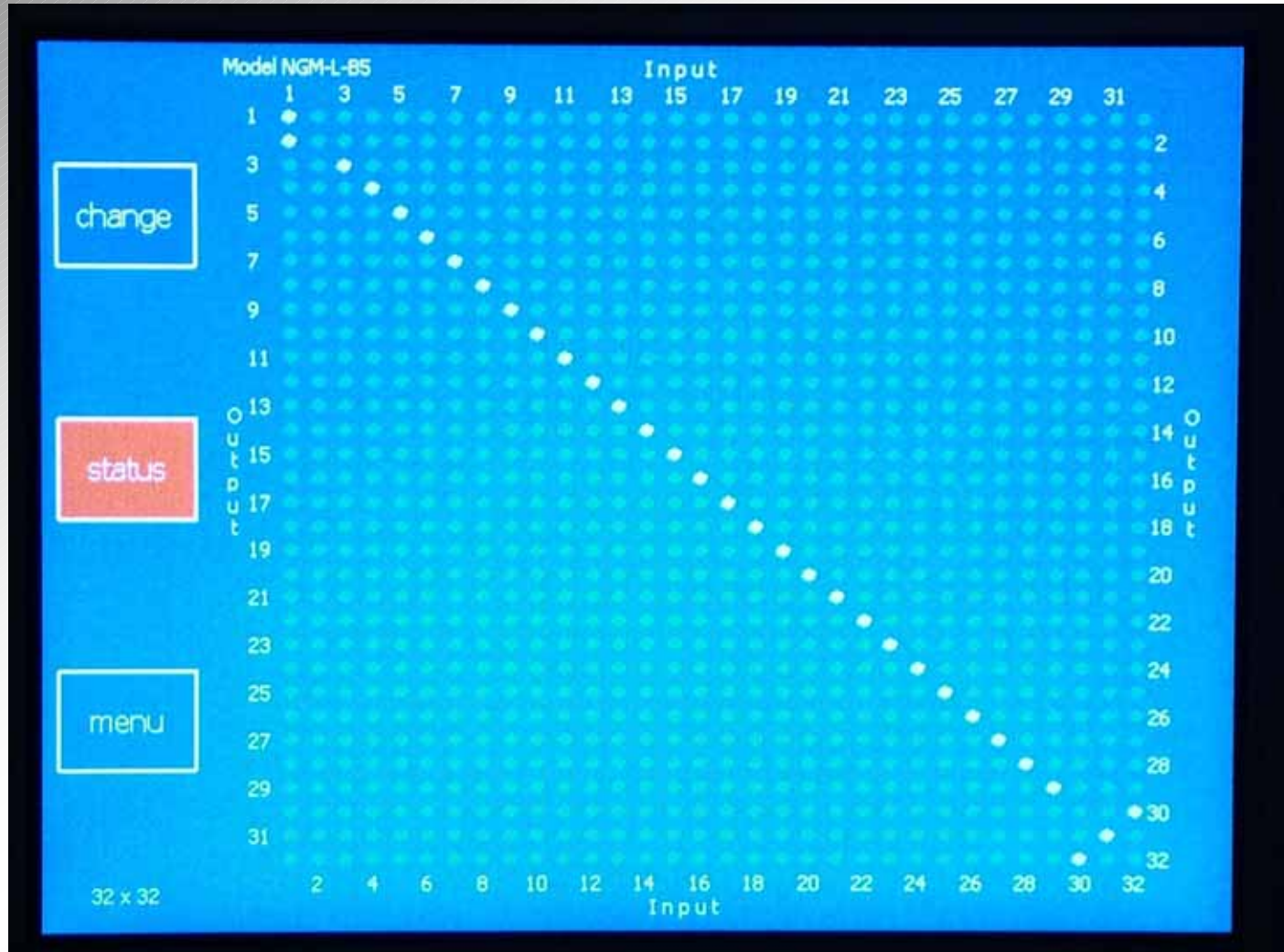
# NiGMa –性能 III



- ✓ 850 – 2150 MHz 工作频段
- ✓ 55 dB 隔离度
- ✓ +/- 2.0 dB 平坦度
- ✓ + 0 dBm 1 dB GCP
- ✓ > 10 dB 回波损耗
- ✓ 50 或 75 欧姆, BNC, F-type, 或 SMA 接头



# NiGMa – 全屏幕显示



# NiGMa – 设置交叉点



The screenshot displays the NiGMa interface for Model NGM-L-B5. It features a 32x32 grid with 'Input' columns (1-31) and 'Output' rows (1-31). A central dialog box titled 'Change routing' is open, showing the following configuration:

Input Number	Input Alias
7	S-007
Output Number	Output Alias
5	D-005

Below the configuration fields is a numeric keypad with buttons for 7, 8, 9, 4, 5, 6, 1, 2, 3, del, and 0. To the right of the keypad are buttons for 'input', 'output', 'take', and 'close'. A text prompt reads: 'Press Take to set route or enter new settings'. On the left side of the grid, there are three buttons: 'change' (cyan), 'status' (red), and 'menu' (cyan). The bottom left corner of the grid is labeled '32 x 32'.

# NiGMa – 矩阵状态



Matrix Status

CPU 1

- HMI Communications
- Power Supply 1
- Power Supply 2
- Internal Summary Alarm

CPU 2

- HMI Communications
- Power Supply 1
- Power Supply 2
- Internal Summary Alarm

card status	card volts	card status	card volts
clear summary	initialise	clear summary	initialise

back

# NiGMa – 板卡状态



## Internal Card Status Flags CPU1

### Switch cards

	C	M	P	A1	A2
1	●	●	●	●	●
2	●	●	●	●	●
3	●	●	●	●	●
4	●	●	●	●	●
5	●	●	●	●	●
6	●	●	●	●	●
7	●	●	●	●	●
8	●	●	●	●	●
9	●	●	●	●	●
10	●	●	●	●	●
11	●	●	●	●	●
12	●	●	●	●	●
13	●	●	●	●	●
14	●	●	●	●	●
15	●	●	●	●	●
16	●	●	●	●	●

### Splitter cards

	C	M	P	A1	A2
17	●	●	●	●	●
18	●	●	●	●	●
19	●	●	●	●	●
20	●	●	●	●	●
21	●	●	●	●	●
22	●	●	●	●	●
23	●	●	●	●	●
24	●	●	●	●	●
25	●	●	●	●	●
26	●	●	●	●	●
27	●	●	●	●	●
28	●	●	●	●	●
29	●	●	●	●	●
30	●	●	●	●	●
31	●	●	●	●	●
32	●	●	●	●	●

back

Legend: C = Card Communications status  
M = Monitoring function status

P = Amplifier PSU status  
A1 = Amplifier 1 bias voltage status  
A2 = Amplifier 2 bias voltage status

# NiGMa – 多种方式设置逻辑



The screenshot shows a menu titled "Set Aliases CPU 1" with the following fields and buttons:

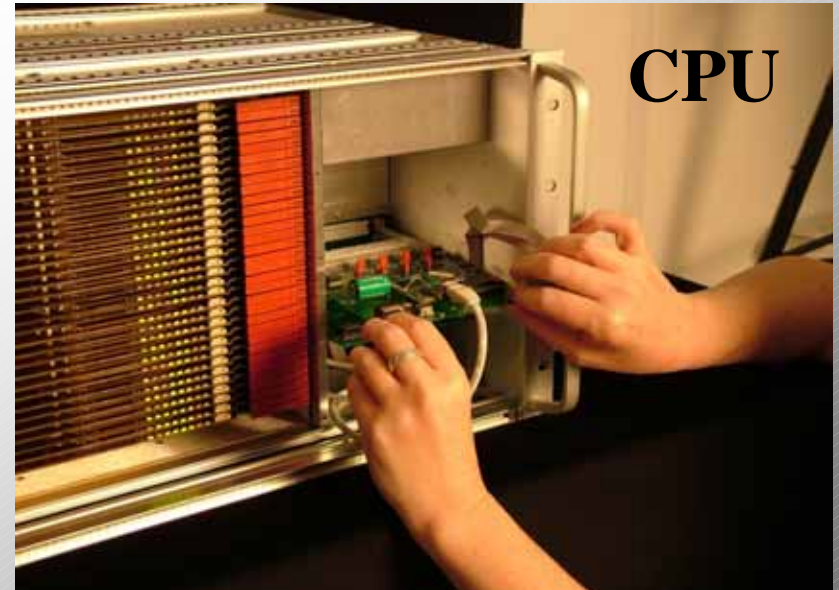
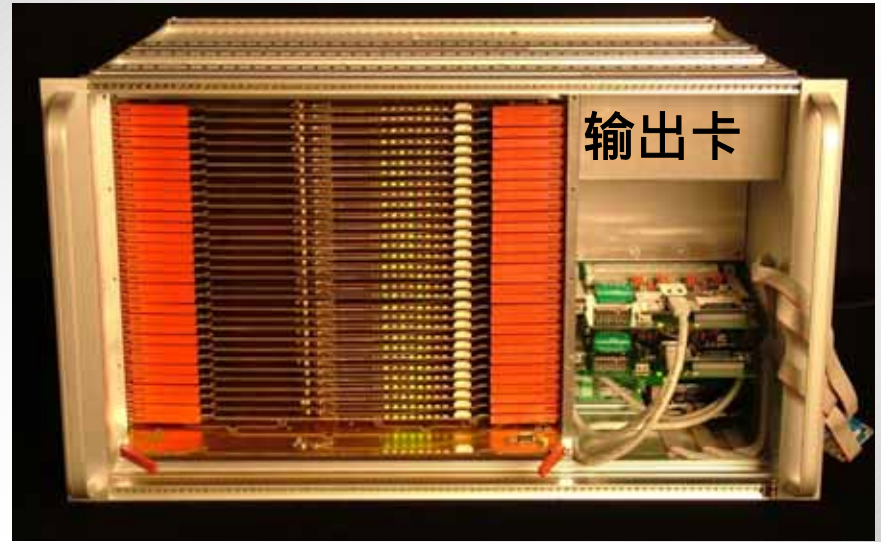
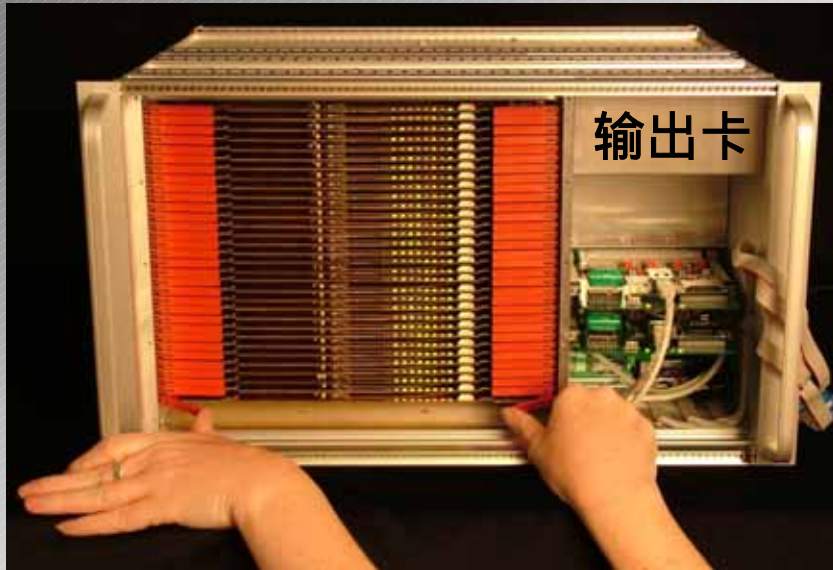
- I/O number: 5
- Input: 5
- Current alias: S-005
- New alias: astra

Buttons available: input, output, set alias, defaults, close.

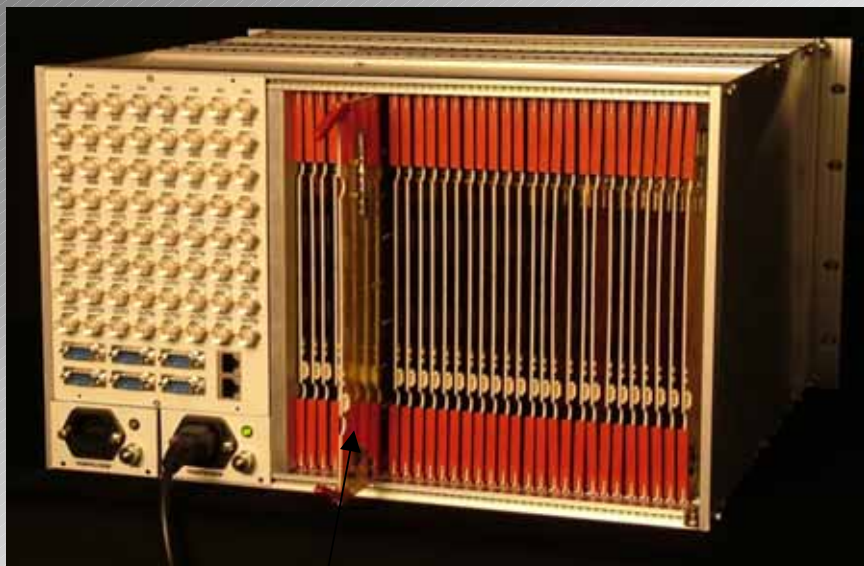
Below the menu is a keyboard layout with the following keys:

Esc	F1	F2	F3	F4	F5	F6	F7	F8	F9	F10	F11	F12	Home	End	Prop
`	1	2	3	4	5	6	7	8	9	0	-	=	BS		
Tab	q	w	e	r	t	y	u	i	o	p	[	]	\		
Caps Lock	a	s	d	f	g	h	j	k	l	;	'	return			
Shift	z	x	c	v	b	n	m	,	.	/	up		pgup		
Ctrl	win	Alt						ins	del	lt	dn	rt	pgdn		

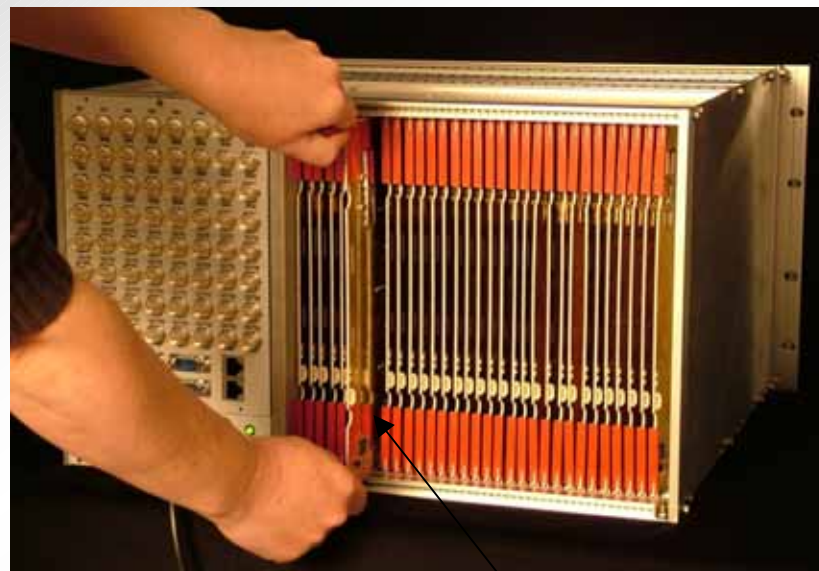
# NiGMa – 板卡 & CPU 拔插



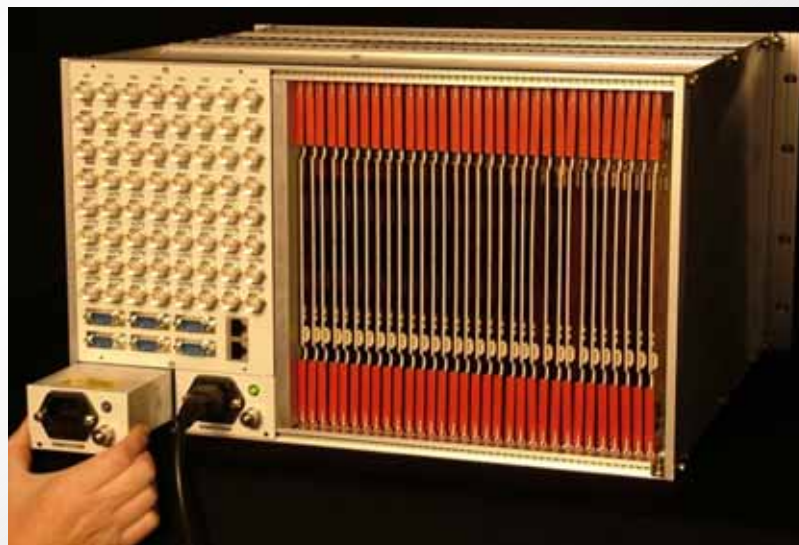
# NiGMa – 输入板卡 & 电源 拔插



输入板卡



输入板卡



电源



# NiGMA:

可靠、安全、稳定、高性能

For more information, please contact:

Ian Hilditch or Andrew Bond  
ETL Systems:

+44 (0) 1981 259825  
Or email

[info@etlssystem.com](mailto:info@etlssystem.com)

[www.etlssystem.com](http://www.etlssystem.com)

etl