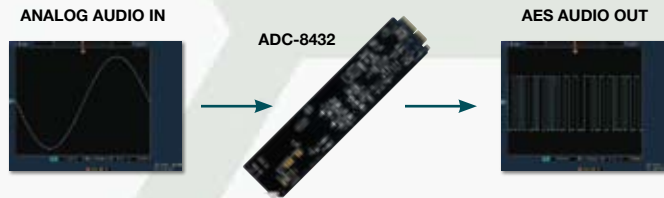


## Analog to AES / EBU Digital Audio Converter

Analog to AES / EBU converter with 24-bit resolution.

The openGear ADC-8432 is a broadcast quality Analog Audio to AES / EBU Converter used to convert two analog audio channels to an AES / EBU signal. The ADC-8432 accepts one stereo (Left, Right) analog audio pair and provides four copies of the AES / EBU signal. The conversion from analog to digital is performed with 24-bit precision. The ADC-8432 supports sampling rates of 32kHz to 192kHz with AES (DARS) reference or internal reference. The AES output frequency (32kHz to 192kHz) can be automatically determined by the reference selected as long as it is a valid DARS Audio reference or set manually when no reference is present.



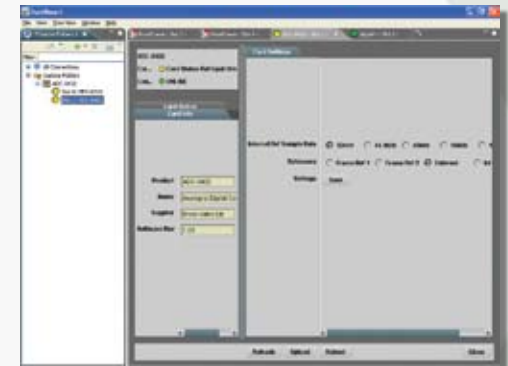
### Features

- Converts analog audio to AES / EBU digital audio and provides AES / EBU signal distribution
- Synchronize to frame or external Digital Audio Reference Signal (DARS) audio reference signals
- Internal clock generates audio sampling frequencies of 32kHz, 44.1kHz, 48kHz, 96kHz or 192kHz
- 24-bit technology provides the highest quality signal conversion
- Suitable for 75Ω or 110Ω environments by selecting the required rear module
- Higher density with up to 20 cards in a DFR-8320 series frame
- Fits DFR-8310 and DFR-8320 series frames
- 5-year transferable warranty
- Power: 4 watts

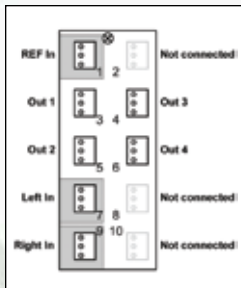
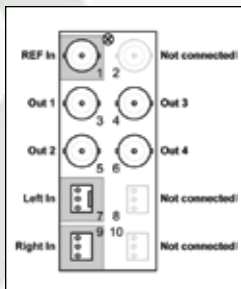


### REMOTE CONTROL and MONITORING

- Network control
- Ethernet 10/100 Mbit connectivity
- System wide alarm monitoring



Rear Connection



Functional Block Diagram

